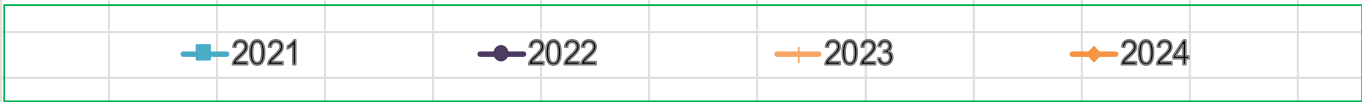
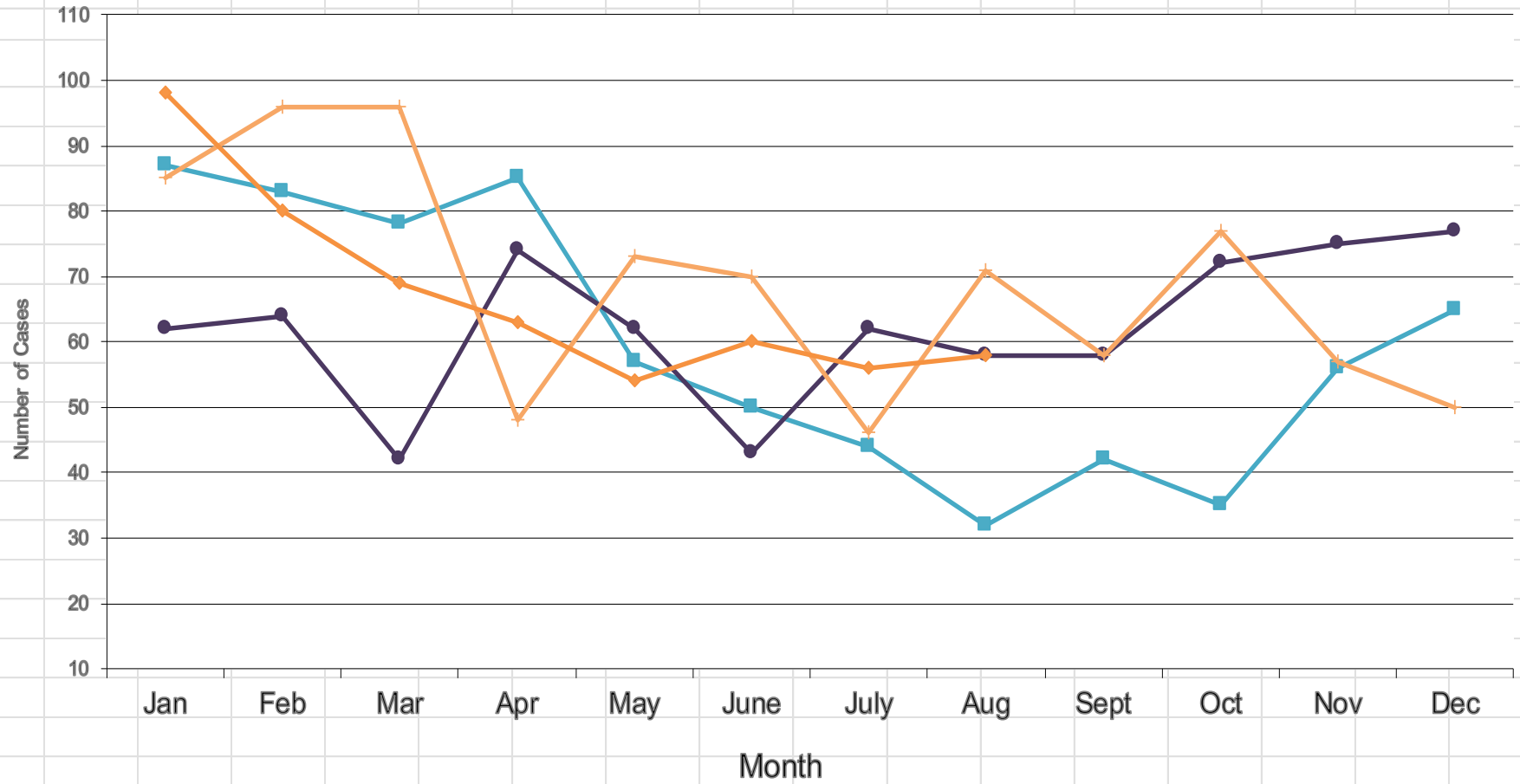
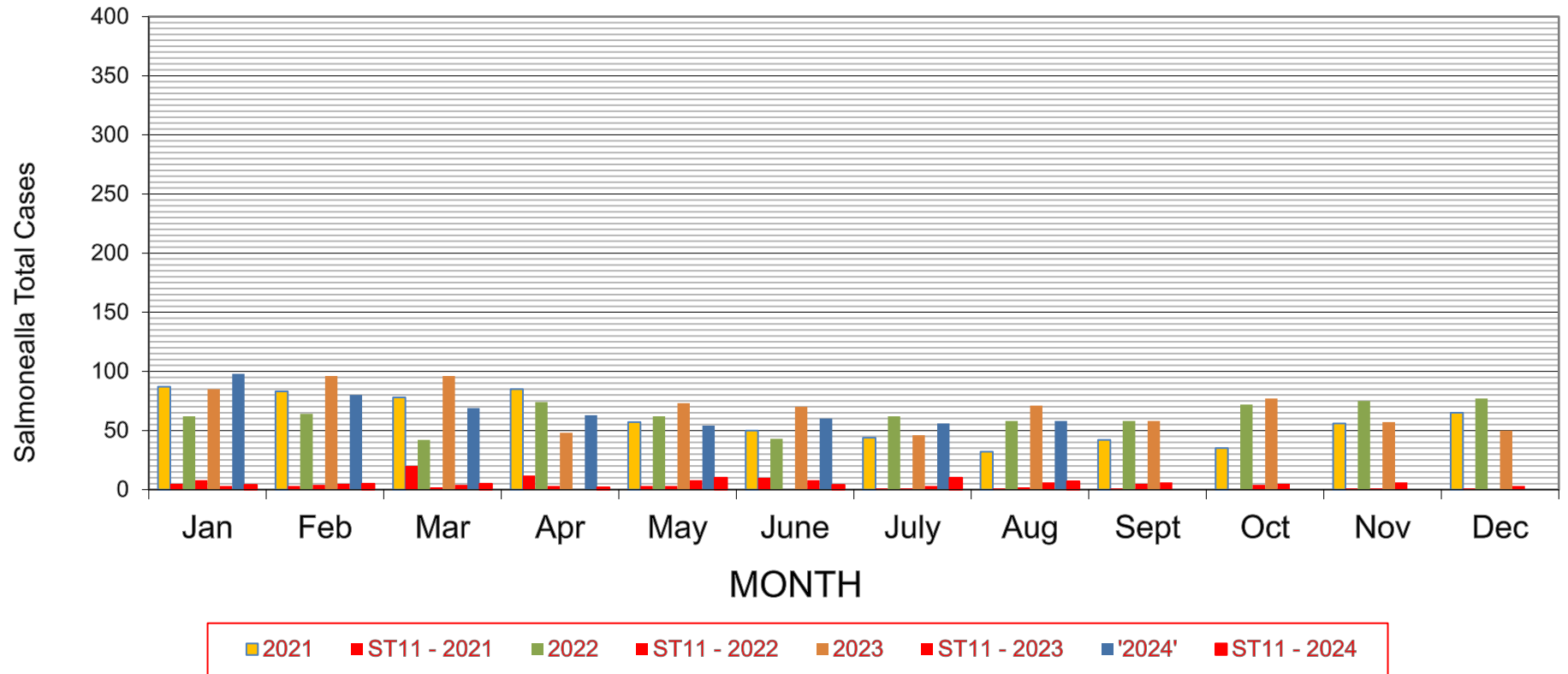


NZ Monthly Salmonella Cases

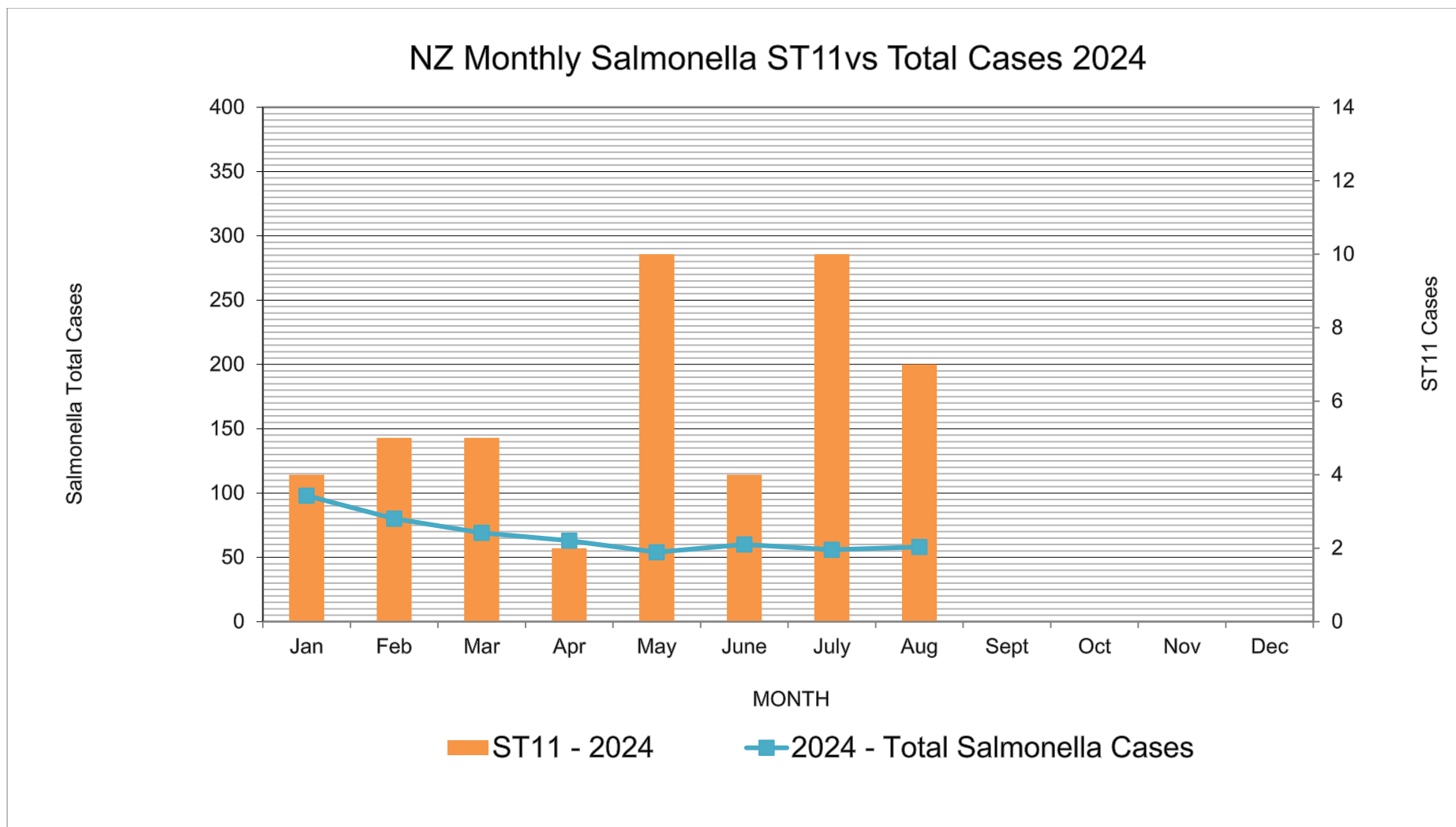


(Human) NZ Monthly Salmonella ST11 Cases vs Total Salmonella Cases



NOTE: ST11 can include the poultry subtype.

The New Zealand poultry SE is not present in the isolations since January 2023.



*ST11 Cases Travel Related:*

*January 2 cases, February 4 cases, March 3 cases, April 0 cases, May 7 cases, June 2 cases, July 8 cases, August 6 cases*