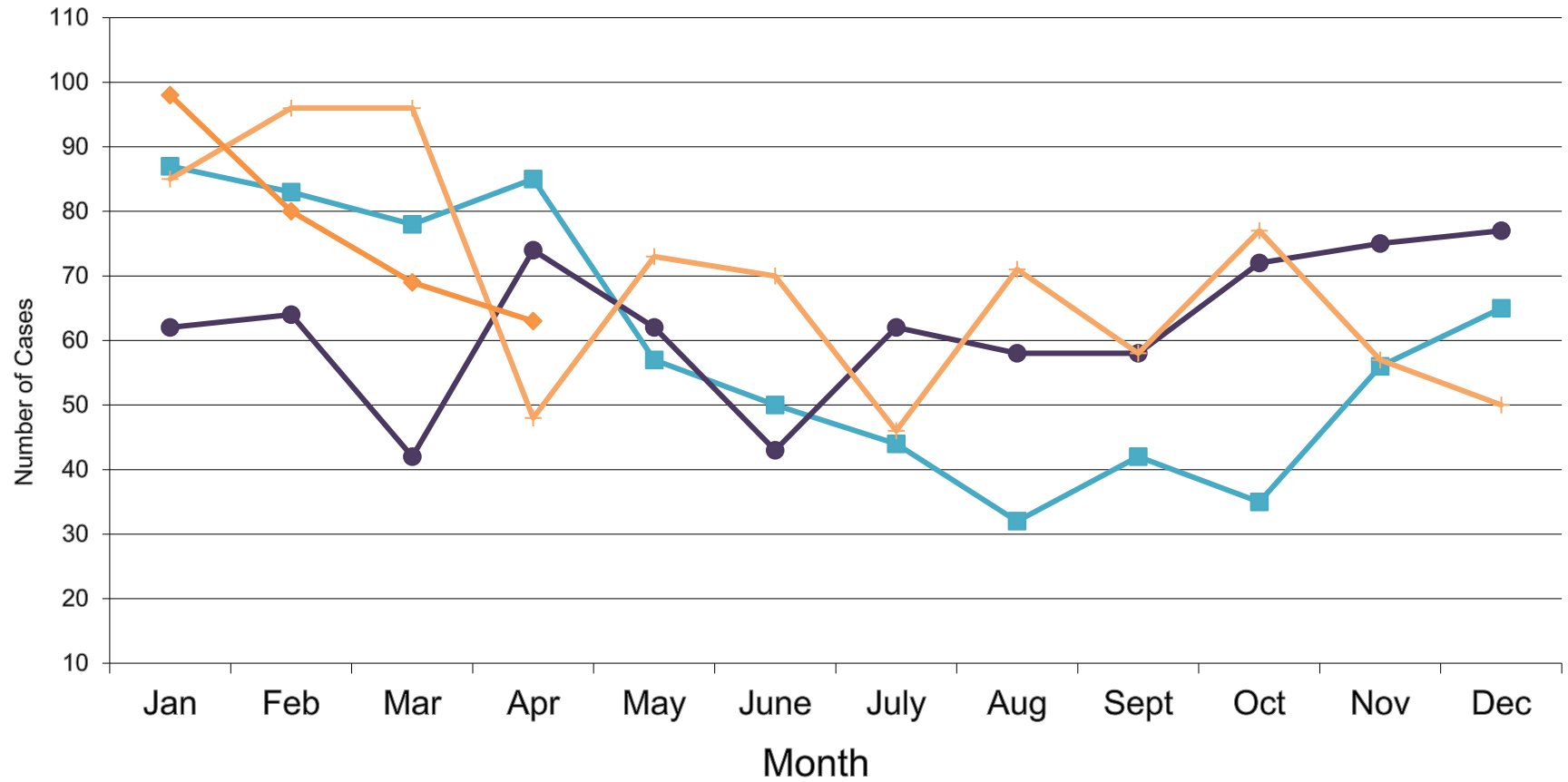
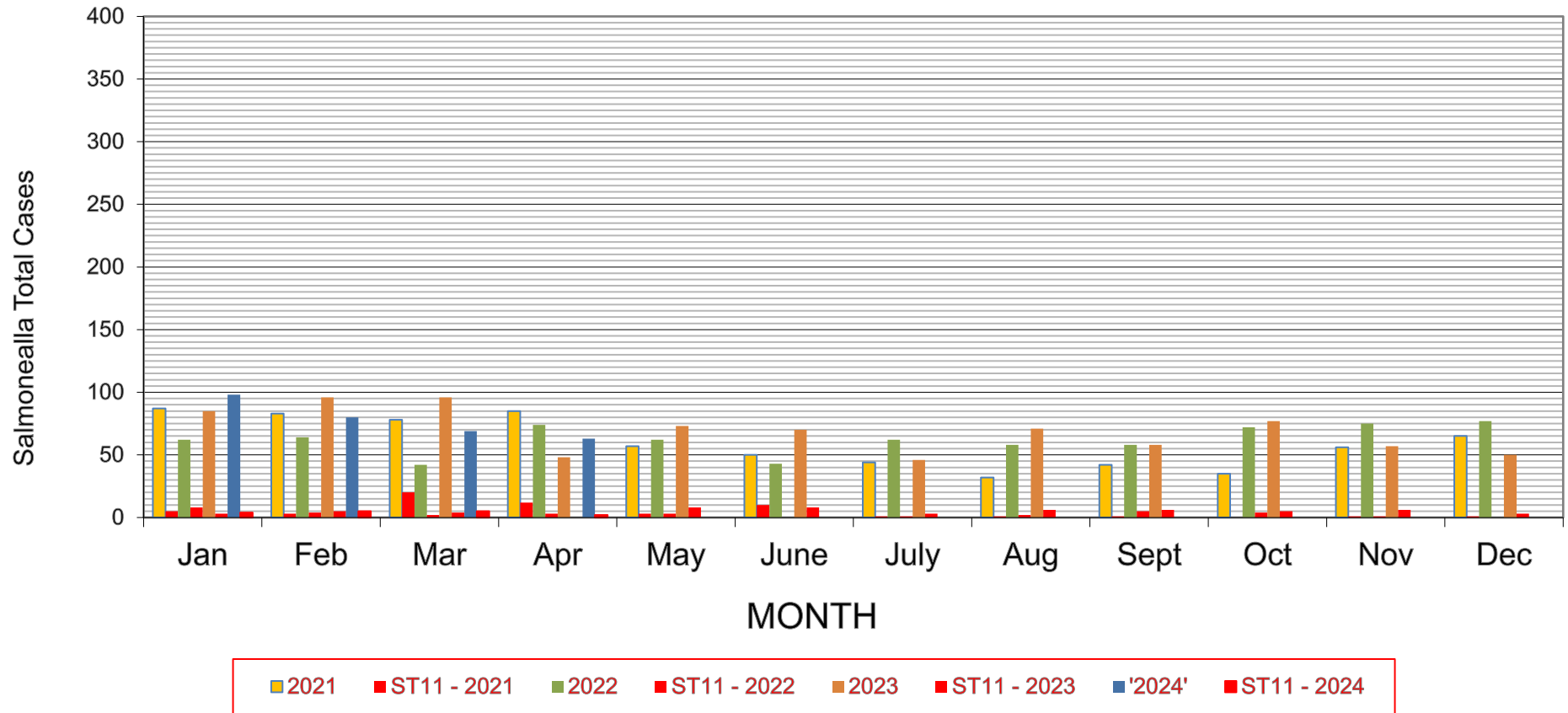


NZ Monthly Salmonella Cases



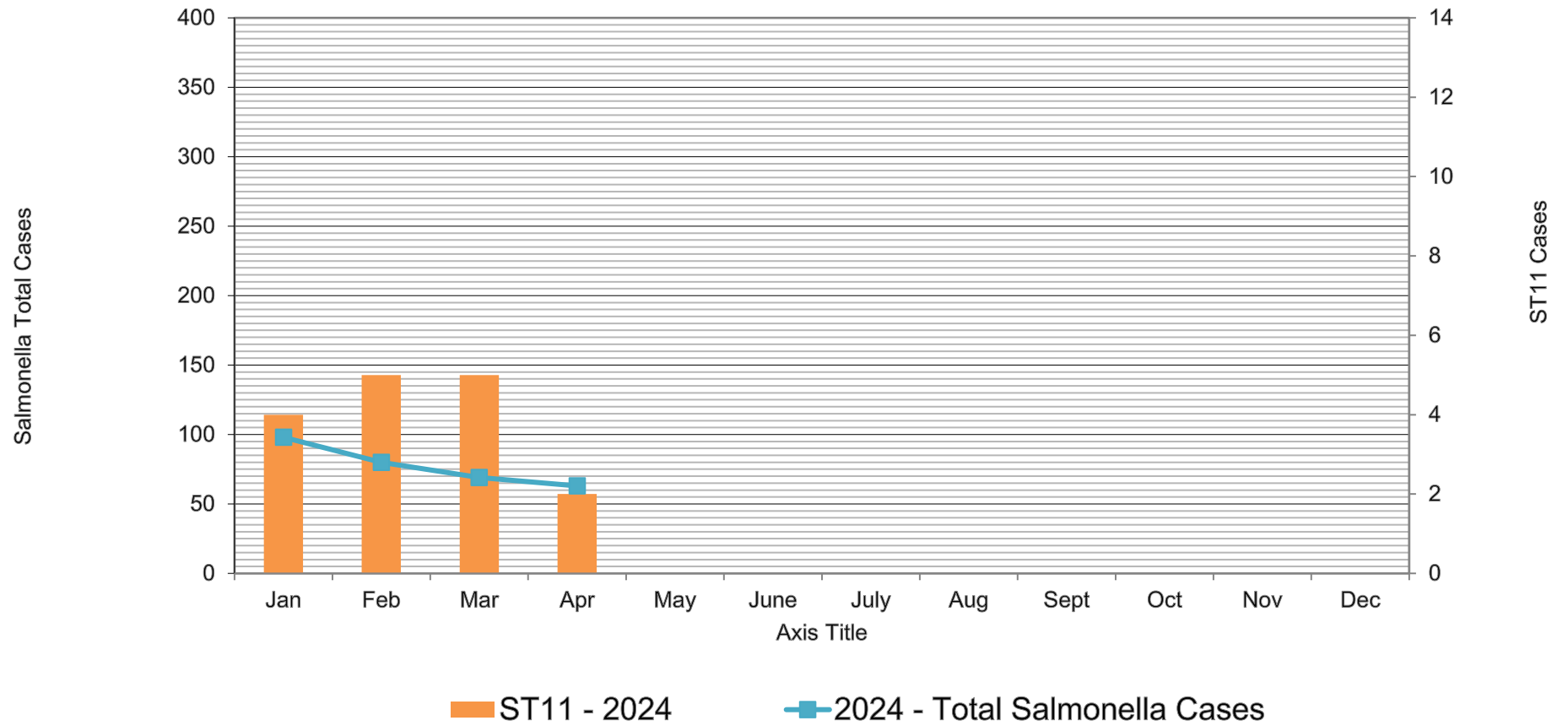
(Human) NZ Monthly Salmonella ST11 Cases vs Total Salmonella Cases



NOTE: ST11 can include the poultry subtype.

The New Zealand poultry SE is not present in the isolations since January 2023.

NZ Monthly Salmonella ST11vs Total Cases 2024



ST11 Cases Travel Related:

January 2 cases, February 4 cases, March 3 cases, April 0 cases