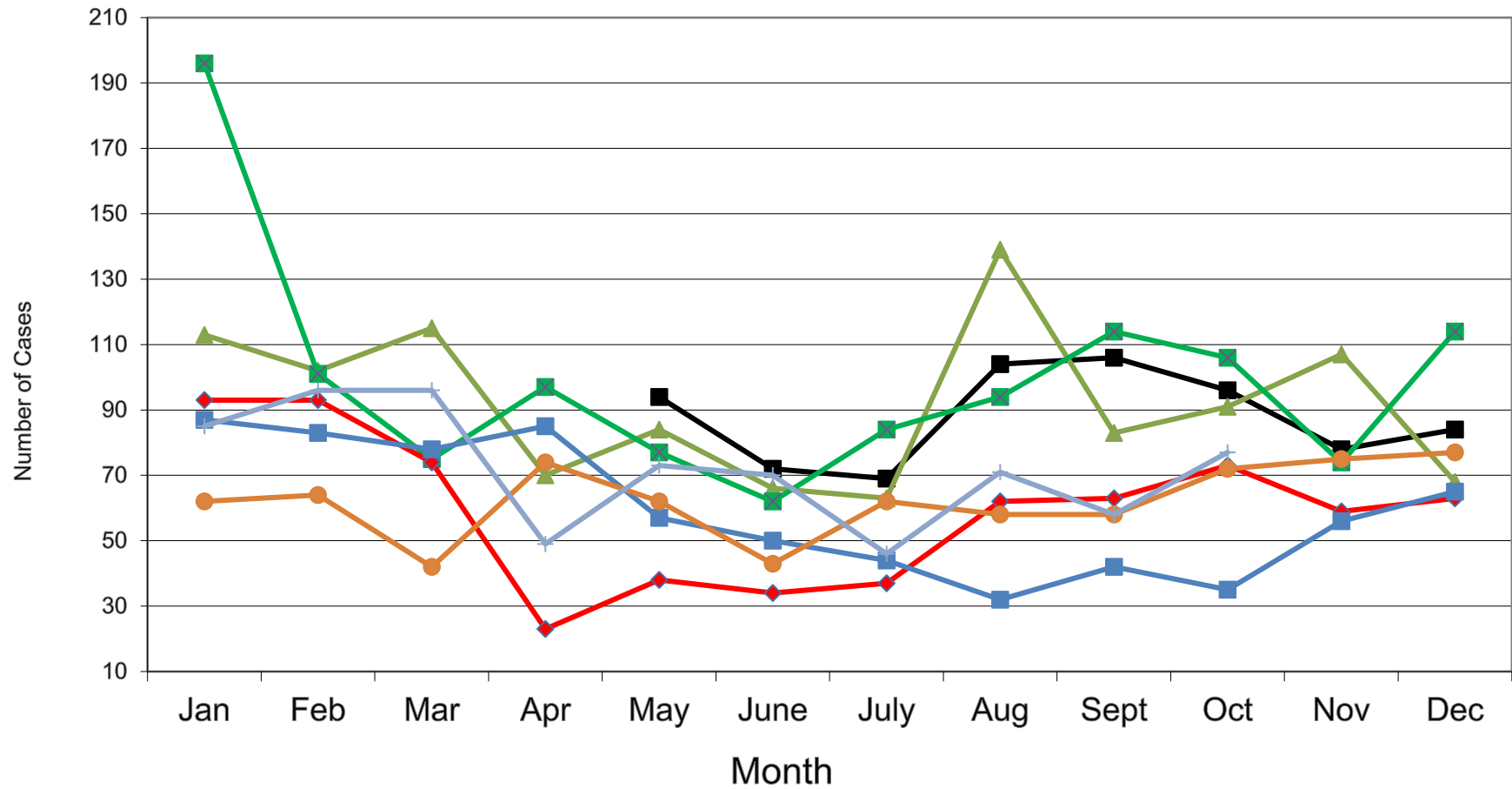
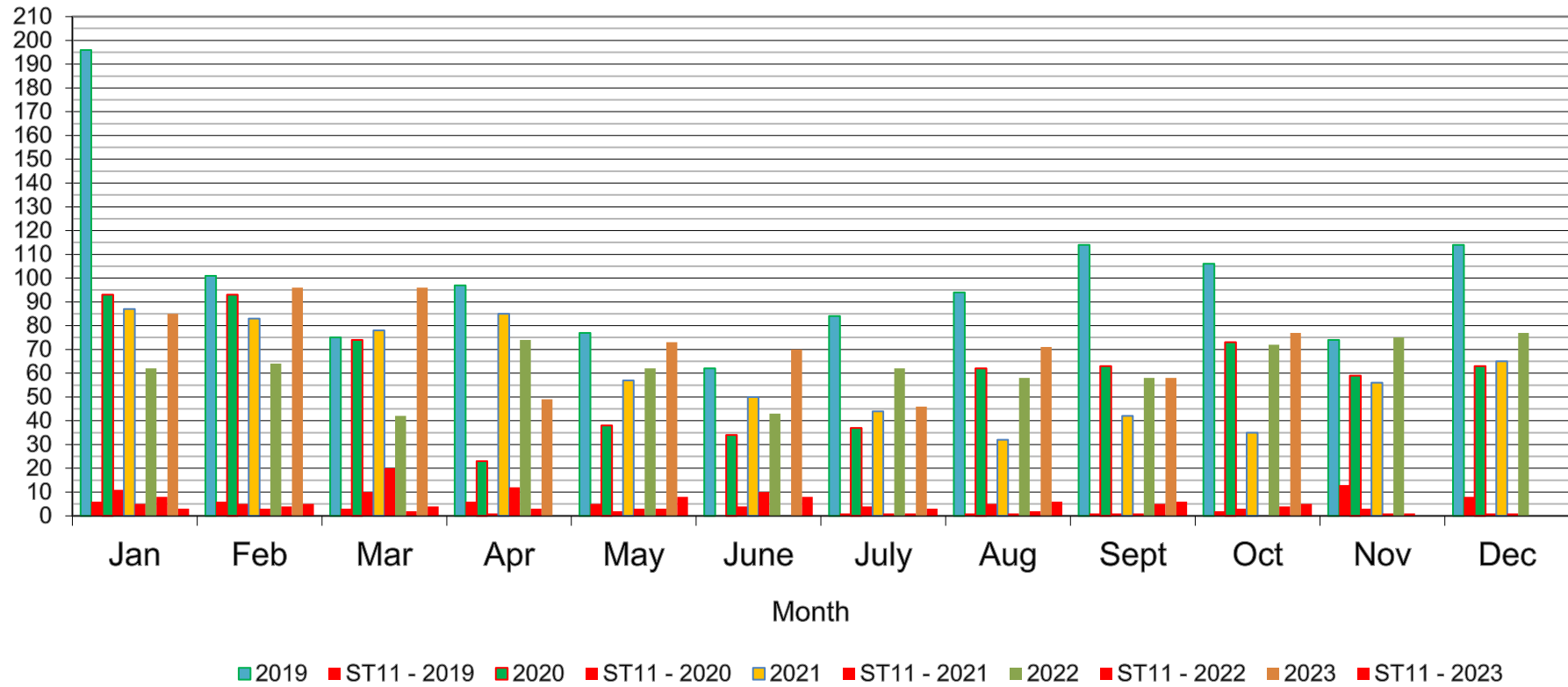


### NZ Monthly Salmonella Cases

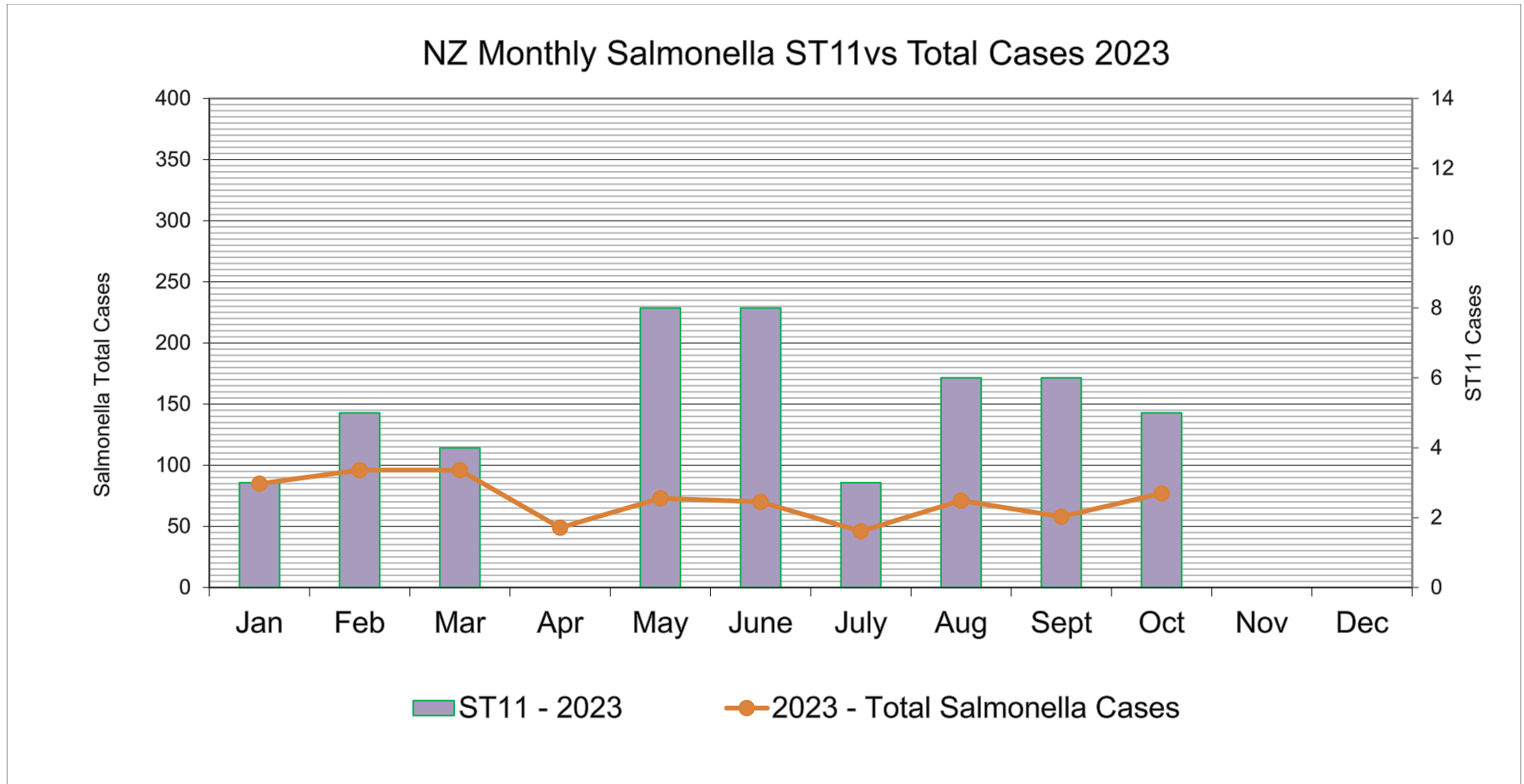


■ 2017    ▲ 2018    ■ 2019    ◆ 2020    ■ 2021    ● 2022    + 2023

(Human) NZ Monthly Salmonella ST11 Cases vs Total Salmonella Cases



NOTE: ST11 can include the poultry subtype.



*ST11 Cases Travel Related:*

January, February and March: each had two cases

April reported nil / May four / June six / July nil / August four / September four / October four /