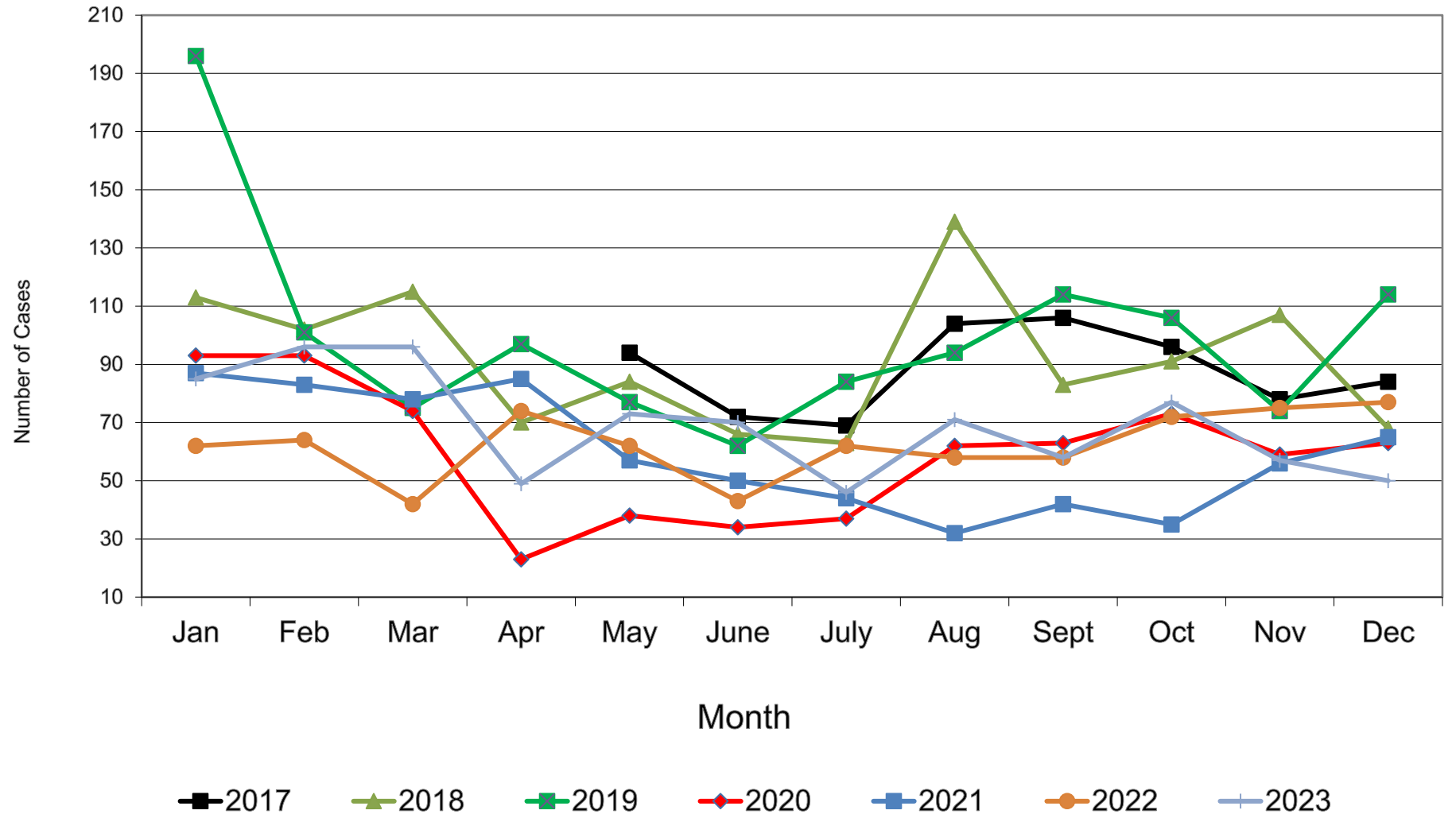
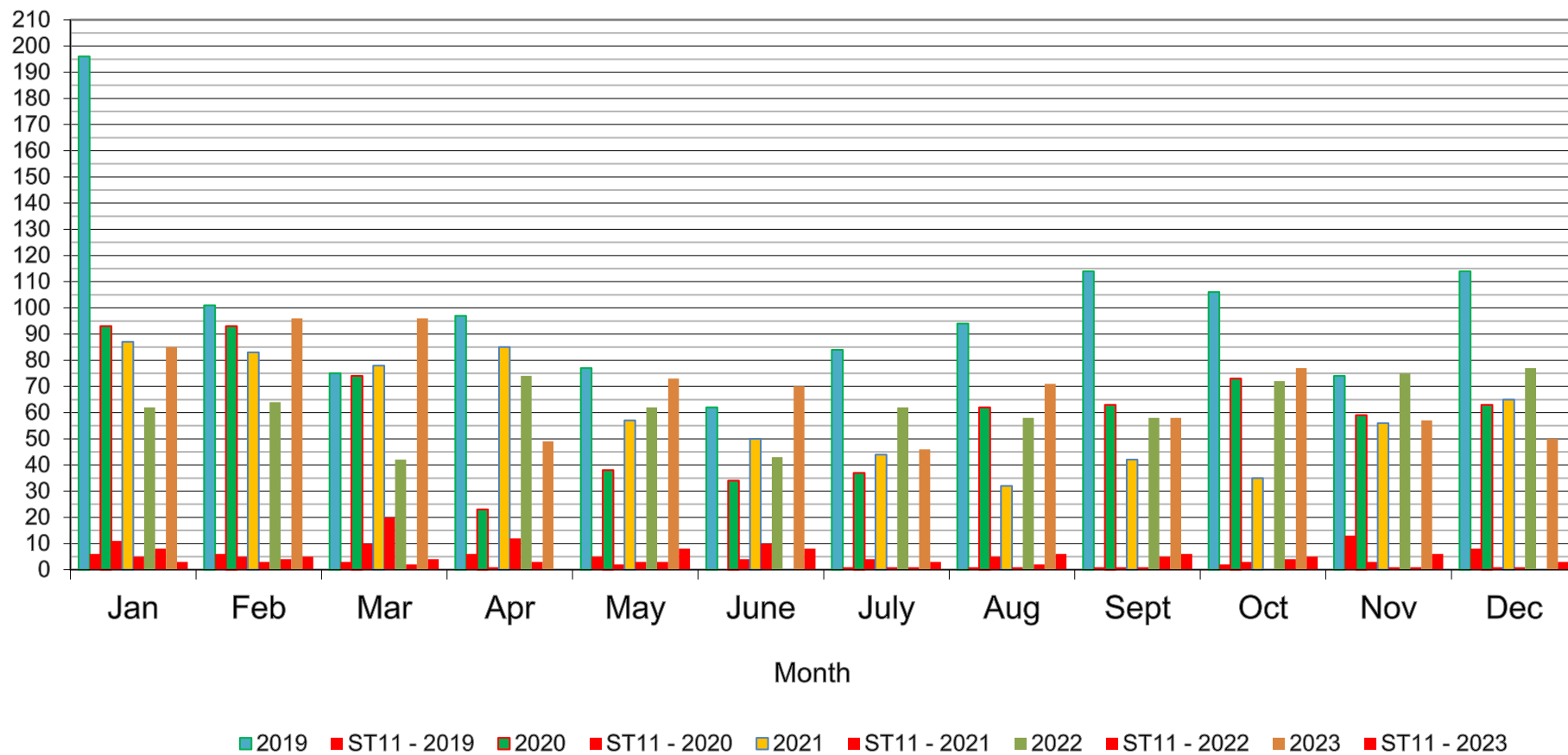


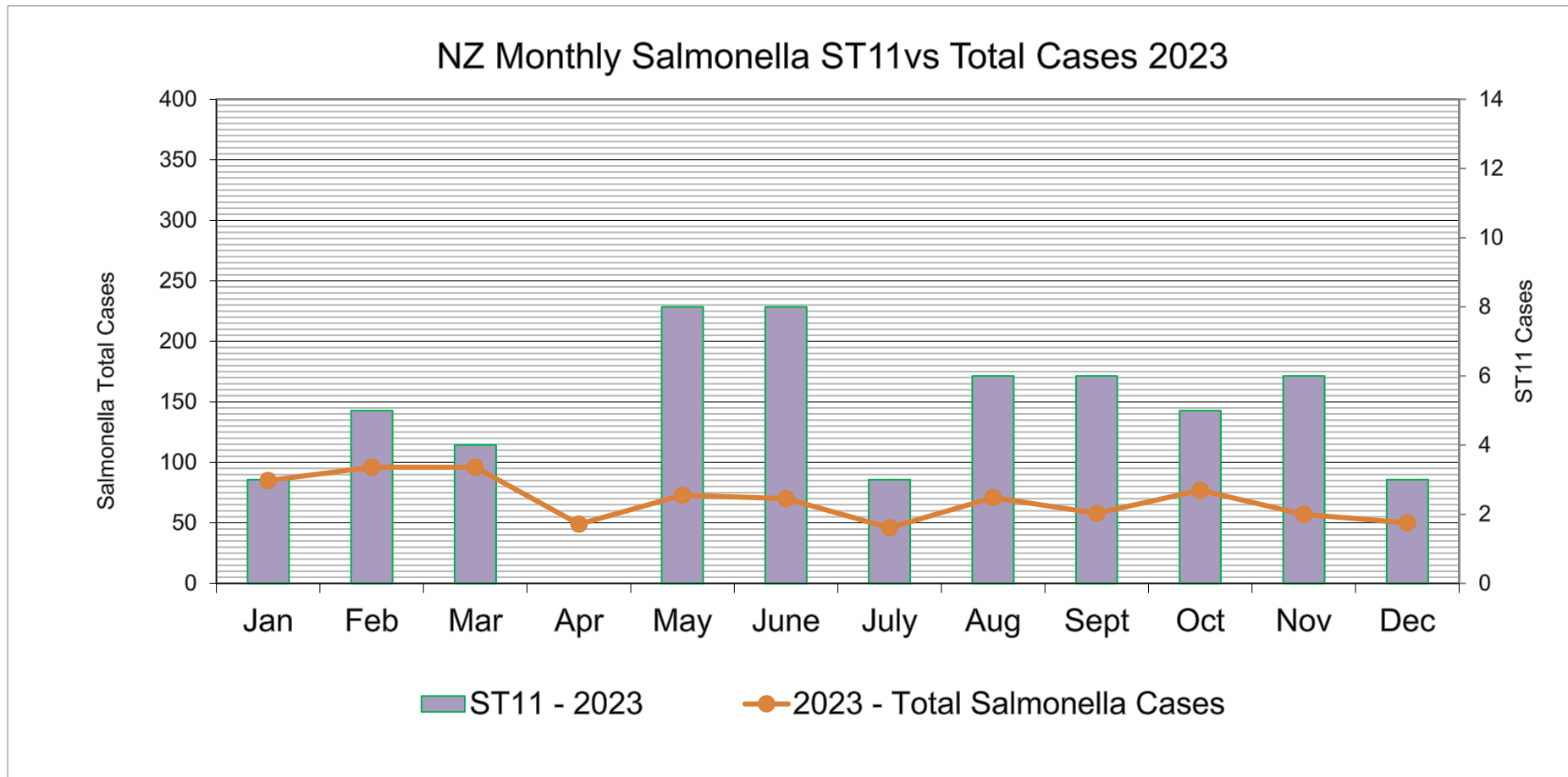
NZ Monthly Salmonella Cases



(Human) NZ Monthly Salmonella ST11 Cases vs Total Salmonella Cases



NOTE: ST11 can include the poultry subtype.



ST11 Cases Travel Related:

January, February and March: each had two cases

April reported nil / May four / June six / July nil / August four / September four / October four / November three / December one