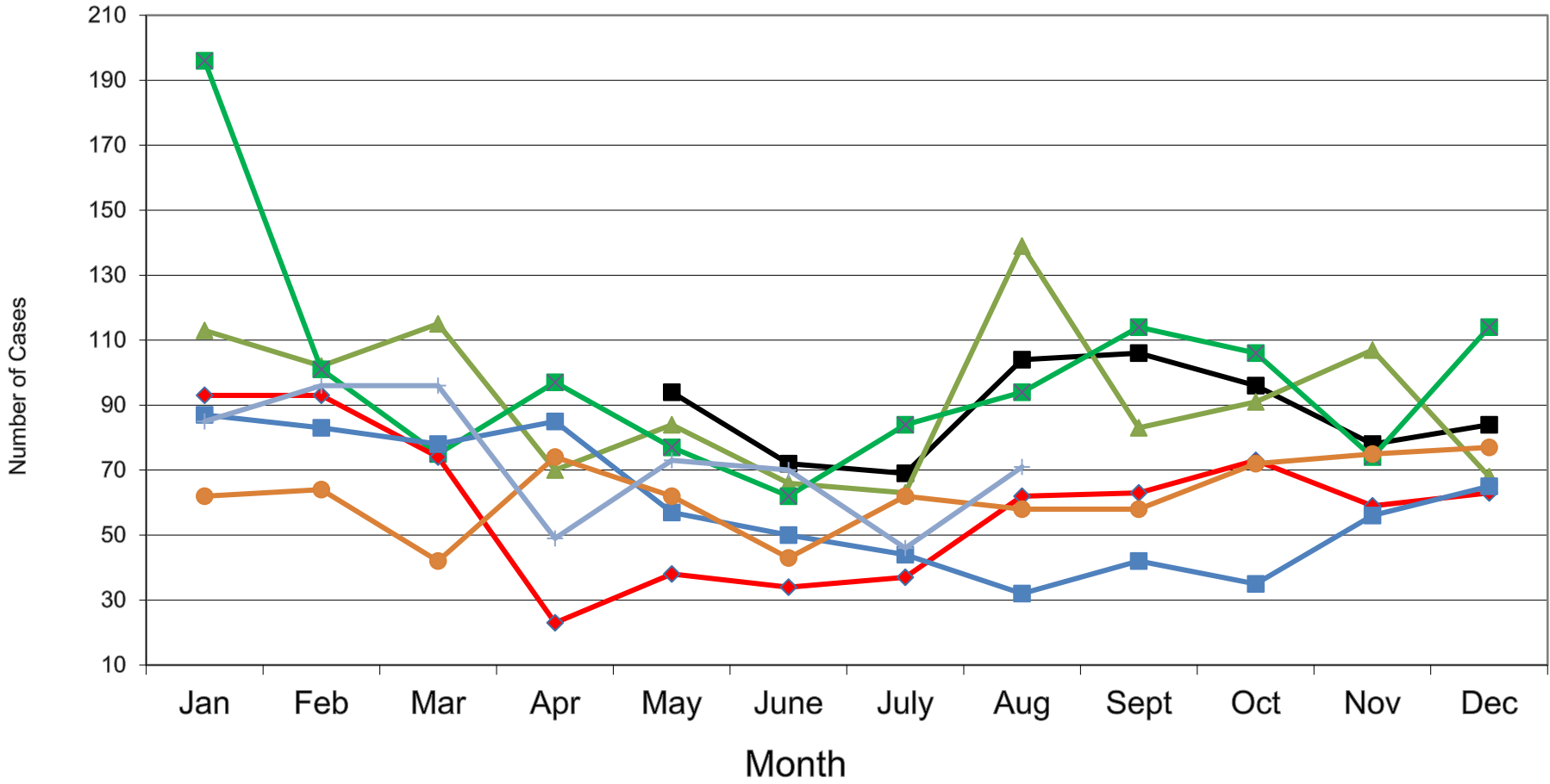
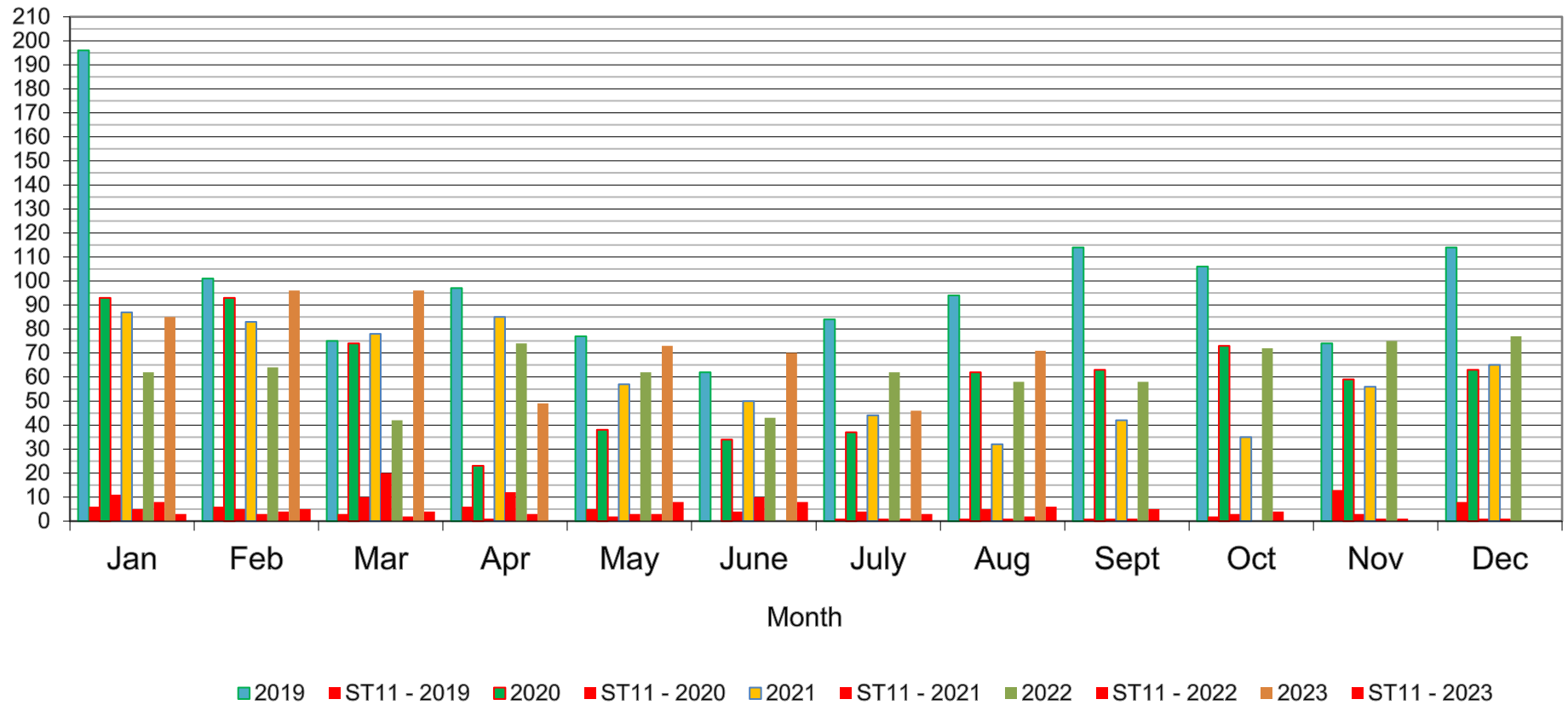


### NZ Monthly Salmonella Cases



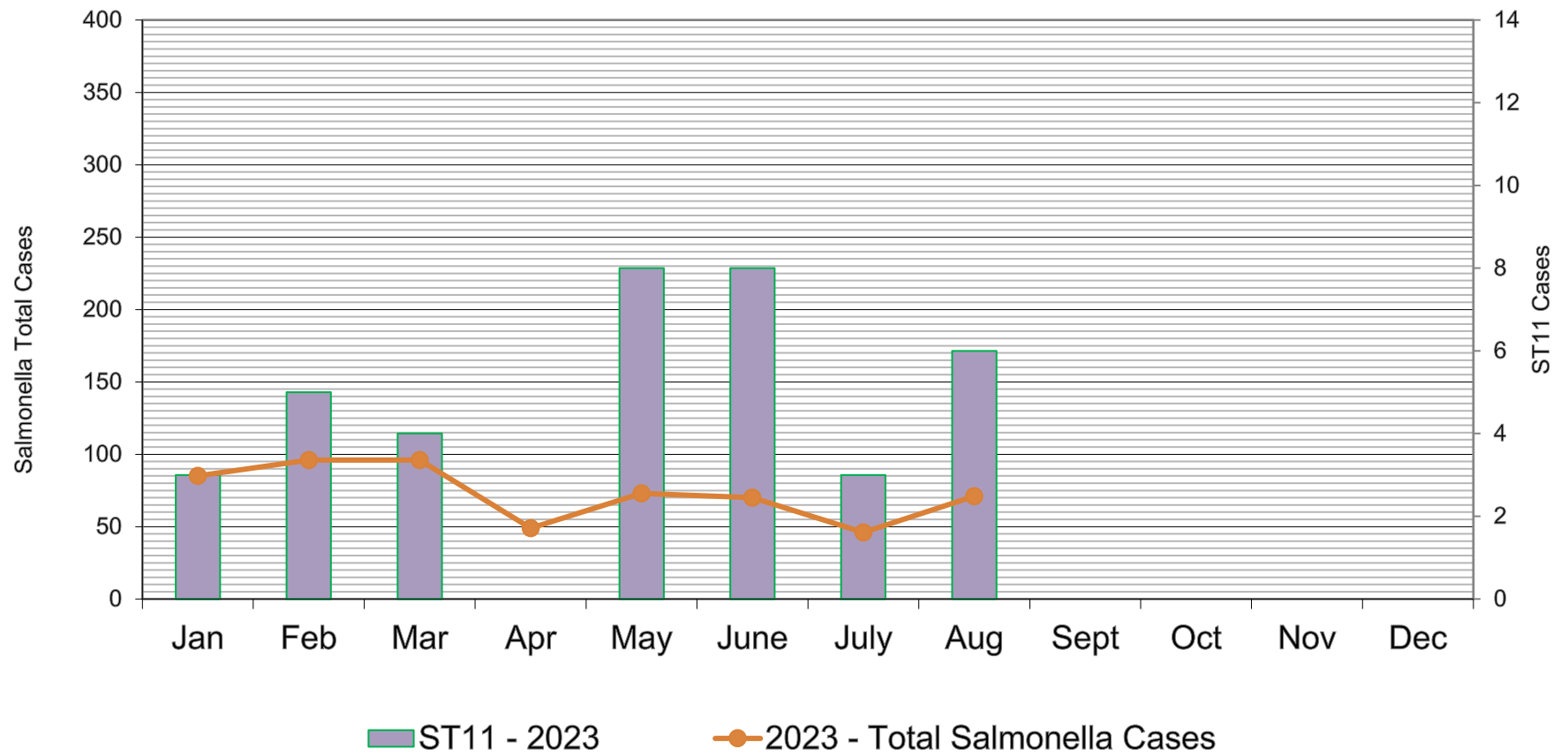
■ 2017    ▲ 2018    ■ 2019    ◆ 2020    ■ 2021    ● 2022    + 2023

(Human) NZ Monthly Salmonella ST11 Cases vs Total Salmonella Cases



NOTE: ST11 can include the poultry subtype.

### NZ Monthly Salmonella ST11vs Total Cases 2023



January, February and March: each had two cases that were travel related.

April reported nil ST11 cases / May four cases travel related / June six cases travel related / August four travel related