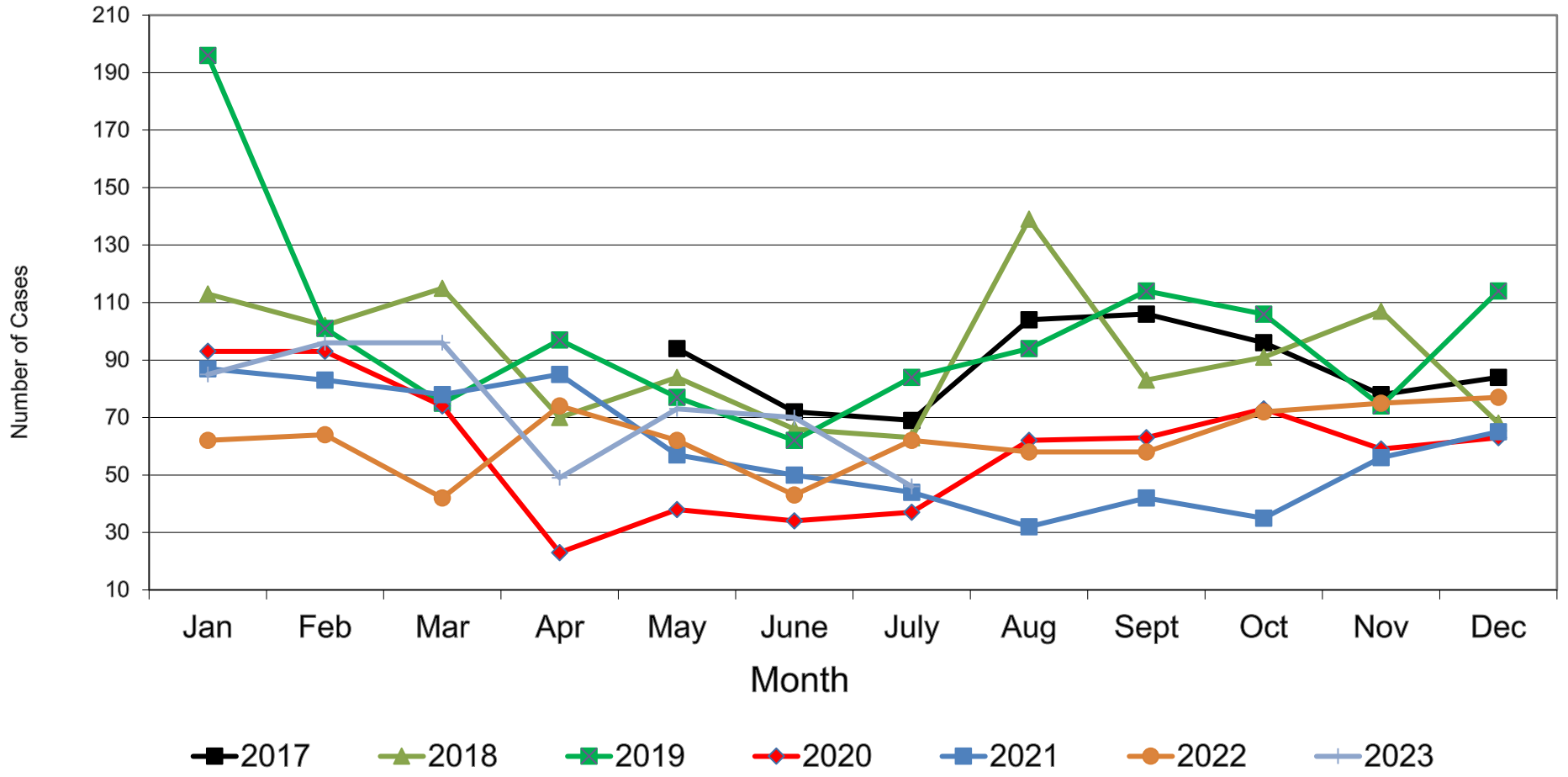
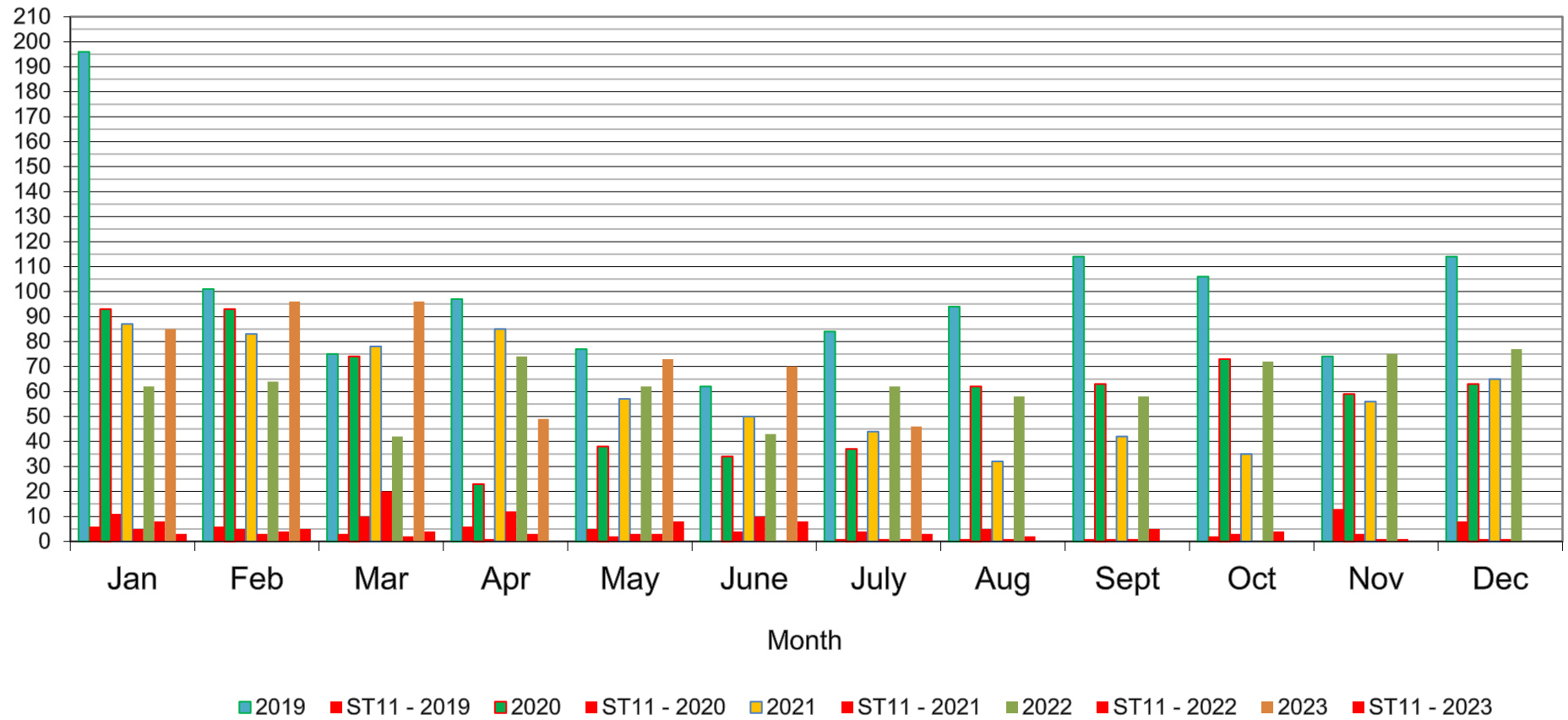


NZ Monthly Salmonella Cases

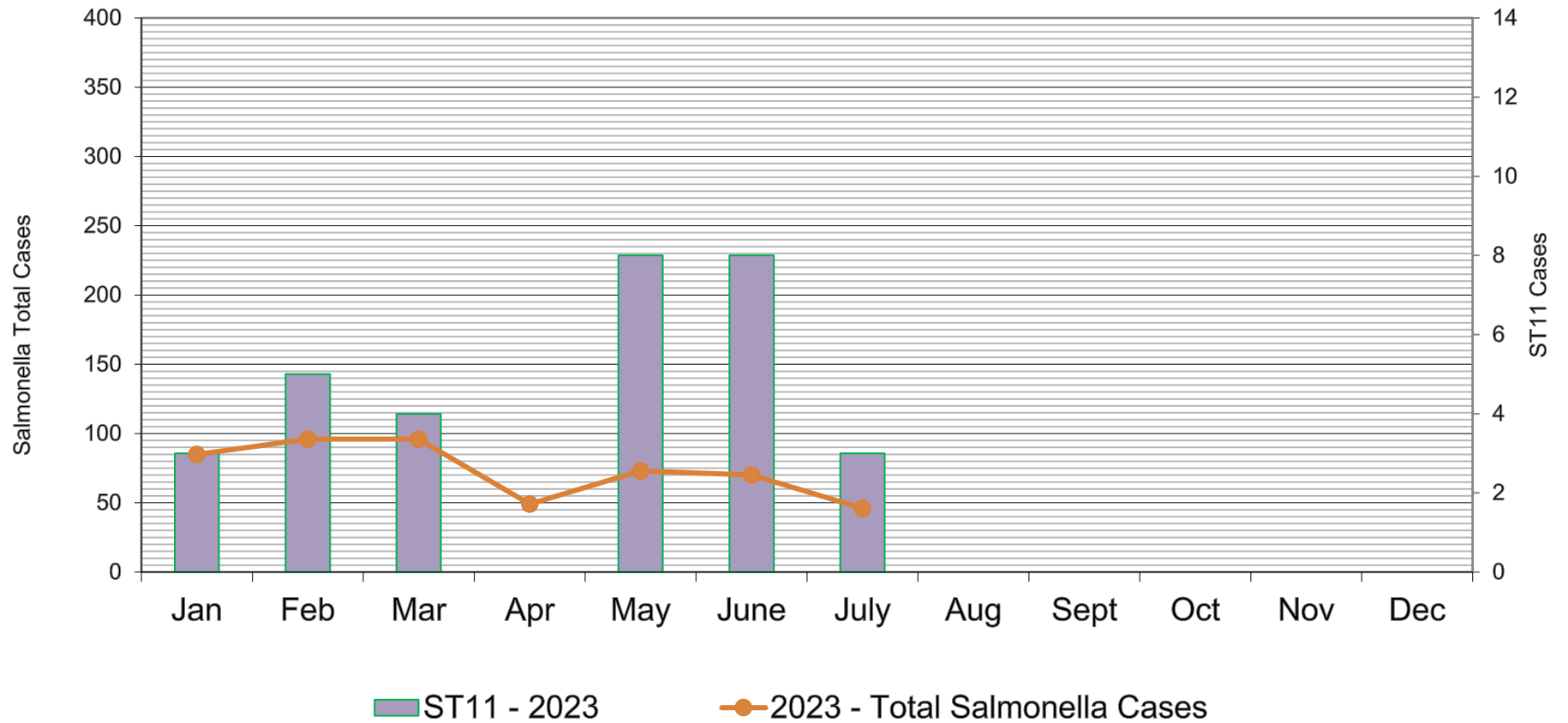


(Human) NZ Monthly Salmonella ST11 Cases vs Total Salmonella Cases



NOTE: ST11 can include the poultry subtype.

NZ Monthly Salmonella ST11vs Total Cases 2023



January, February and March: each had two cases that were travel related.

April reported nil ST11 cases / May 2023 four cases travel related / June 2023 six cases travel related.