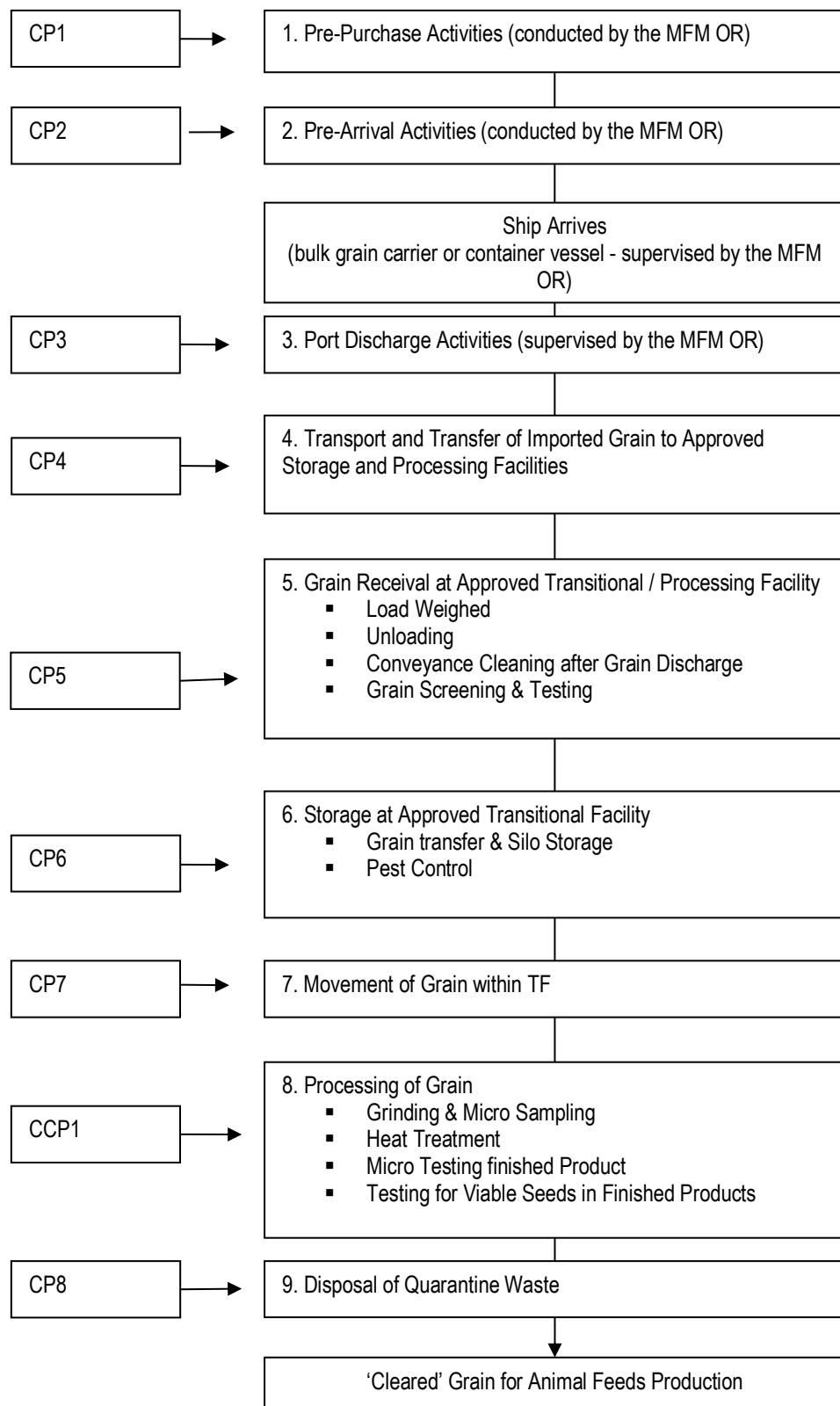


PROCESS FLOW CHART



3.1

PROCESS FLOW CHART

3.2 CCP CRITICAL CONTROL POINT CHART CONTINUED

Process Step	Hazard(s)	Control(s)	Output(s)
8. Processing of Grain at the TF - CCP1	Processing is insufficient to kill pests and destroy viability of seeds MPI approved treatment not conducted Cross contamination	Maintenance programme Temperature measured using temperature probes Ground grain heat treated to minimum 70 - 90°C. Console operator continually monitoring temperature during production Temperatures are recorded electronically hourly Printed out daily and filed. If the console temperature drops below 70°C the console operator will adjust the steam to increase temperature back to 70 - 90°C Non-Conforming product is diverted and reworked Mill supervisor to investigate & correct mal-function to prevent recurrence Mill supervisor to perform scheduled verification audits Equipment calibrated correctly Sampling and Testing for weed seed survival or viability (monthly) Internal audit and monitoring MPI audit and monitoring Suitable ATF approved to hold and process grain	Sample results available Calibration records available for equipment Milling Check Sheet Electronic Console Print Out. Records available Grain held securely and processed appropriately
9. Waste Products – CP8	Escape of Regulated Pests from TF Spillage en route to deep burial	Documented approved Biosecurity waste transfer and disposal method All transfer of waste for deep burial authorised on MPI BACC and taken directly to MPI approved waste facility Supervision of transfer of waste for deep burial by MPI Driver of conveyance has been trained and carries contingency and route	Waste grain disposed of in accordance with Biosecurity requirements with no escape of regulated pests

3.1

PROCESS FLOW CHART

		plans and basic hygiene kit.	
--	--	------------------------------	--

3.1

PROCESS FLOW CHART

3.2 CCP CRITICAL CONTROL POINT CHART CONTINUED

Process Step	Hazard(s)	Control(s)	Output(s)
8. Processing of Grain at the TF - CCP1	Processing is insufficient to kill pests and destroy viability of seeds MPI approved treatment not conducted Cross contamination	Maintenance programme Temperature measured using temperature probes Ground grain heat treated to minimum 70 - 90°C. Console operator continually monitoring temperature during production Temperatures are recorded electronically hourly Printed out daily and filed. If the console temperature drops below 70°C the console operator will adjust the steam to increase temperature back to 70 - 90°C Non-Conforming product is diverted and reworked Mill supervisor to investigate & correct mal-function to prevent recurrence Mill supervisor to perform scheduled verification audits Equipment calibrated correctly Sampling and Testing for weed seed survival or viability (monthly) Internal audit and monitoring MPI audit and monitoring Suitable ATF approved to hold and process grain	Sample results available Calibration records available for equipment Milling Check Sheet Electronic Console Print Out. Records available Grain held securely and processed appropriately
9. Waste Products – CP8	Escape of Regulated Pests from TF Spillage en route to deep burial	Documented approved Biosecurity waste transfer and disposal method All transfer of waste for deep burial authorised on MPI BACC and taken directly to MPI approved waste facility Supervision of transfer of waste for deep burial by MPI Driver of conveyance has been trained and carries contingency and route	Waste grain disposed of in accordance with Biosecurity requirements with no escape of regulated pests

3.1

PROCESS FLOW CHART

		plans and basic hygiene kit.	
--	--	------------------------------	--